

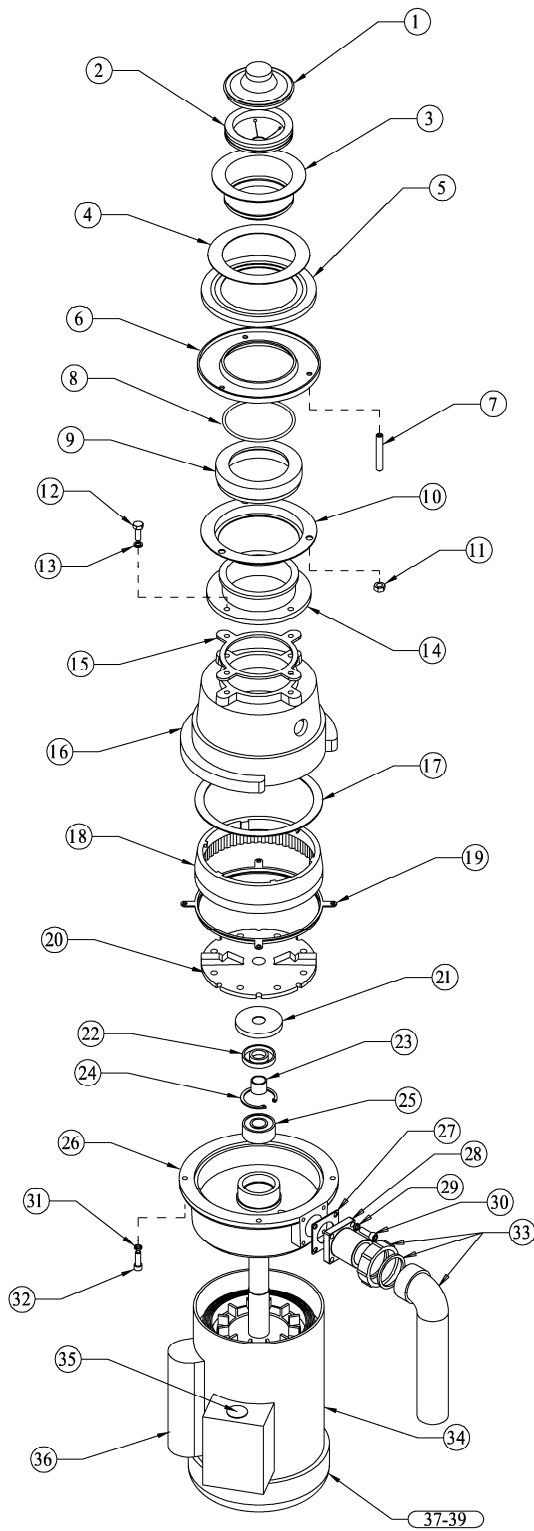
# BusBoy by **NEMCO**

FOOD EQUIPMENT

## MODEL SERIES: 250 DISPOSERS

BASE UNIT NUMBERS  
 B250B000011 (1 PHASE)  
 B250B000015 (3 PHASE)

1/2 HP



ITEM #	PART #	DESCRIPTION	QTY
1	B1 0897	STOPPER	1
2	B1 0003	SPLASH GUARD	1
3	B21 024	SINK FLANGE	1
4	B1 0005	ADAPTOR GASKET	1
5	B1 0006	SOLID WASHER	1
6	B1 0007	TOP MOUNTING RING	1
7	B1 0008	SLOTTED SCREWS	3
8	B1 0009	SNAP RING	1
9	B21 025	SINK SILENCER	1
10	B1 0011	BOTTOM MOUNTING RING	1
11	45050	HEX NUT	3
12	451 26	HEX BOLT	4
13	451 51	WASHER	4
14	B1 0492	ADAPTOR RING	1
15	B1 0483	ADAPTOR GASKET	1
N/S	B1 41 47	TOP ASSEMBLY	1
		- INCLUDES # 1 - 15	
16	B1 0201	HOPPER	1
N/S	B1 301 3	WATER INLET KIT	1
N/S	B1 6800	SHANK WASHER	1
17	B1 0204	TOP GASKET	1
18	B1 0205	CUTTING SLEEVE	1
19	B1 0203	BOTTOM GASKET	1
20	B1 0491	ROTOR	1
21	B1 0021	WATER SHIELD	1
22	B1 0024	WATER SEAL	1
23	B1 0209	ROTOR SPACER	1
24	B1 0208	SNAP RING	1
25	B1 0207	TOP BEARING	1
N/S	B1 9000	BEARING AND SEAL KIT	1
		- INCLUDES # 17, 19, 21 - 25	
26	B1 0659-1	DRAIN HOUSING	1
27	B1 0630	DRAIN ADAPTER GASKET	1
28	B1 0629	DRAIN ADAPTER	1
29	B21 01 9	LOCK WASHER ; DRAIN	4
30	46606	SCREW ; DRAIN	4
N/S	B1 41 43	DRAIN KIT ASSEMBLY	1
		- INCLUDES # 21 - 30	
31	B21 01 9	LOCK WASHER ; DRAIN	4
32	46606	SCREW ; DRAIN	4
33	B1 051 7	DRAIN ELBOW	1
34	B1 0906	MOTOR ASSM ; 1 PHASE	1
	B1 0907	MOTOR ASSM ; 3 PHASE	1
35	B1 4070	RESET SWITCH ; 1 PH ; SCREW-IN	1
	B1 4070-1	RESET SWITCH ; 1 PH ; SNAP-IN	1
	B1 4078	RESET SWITCH ; 3 PH ; SCREW-IN	1
	B1 4078-1	RESET SWITCH ; 3 PH ; SNAP-IN	1
36	B1 4060	CAPACITOR ; 1 PH ; OLD-STYLE	1
	B1 4060-1	START CAPACITOR ; 1 PH ; NEW	1
	B1 4060-2	RUN CAPACITOR ; 1 PH ; NEW	1
37	B1 4065	BOTTOM BEARING ; MOTOR	1
38	B1 4059	COOLING FAN ; MOTOR	1
39	B1 4067	FAN GUARD ; MOTOR	1
N/S	B250PK00011	POWER PACK ; 1 PHASE	1
		- INCLUDES # 17, 19, 21 - 30, 34	
N/S	B250PK00015	POWER PACK ; 3 PHASE	1
		- INCLUDES # 17, 19, 21 - 30, 34	

N/S = NOT SHOWN



301 Meuse Argonne Hicksville, OH  
 1-800-782-6761 Toll Free 419-542-6690 Fax  
[www.nemcofoodequip.com](http://www.nemcofoodequip.com)

47080  
 10/31/06