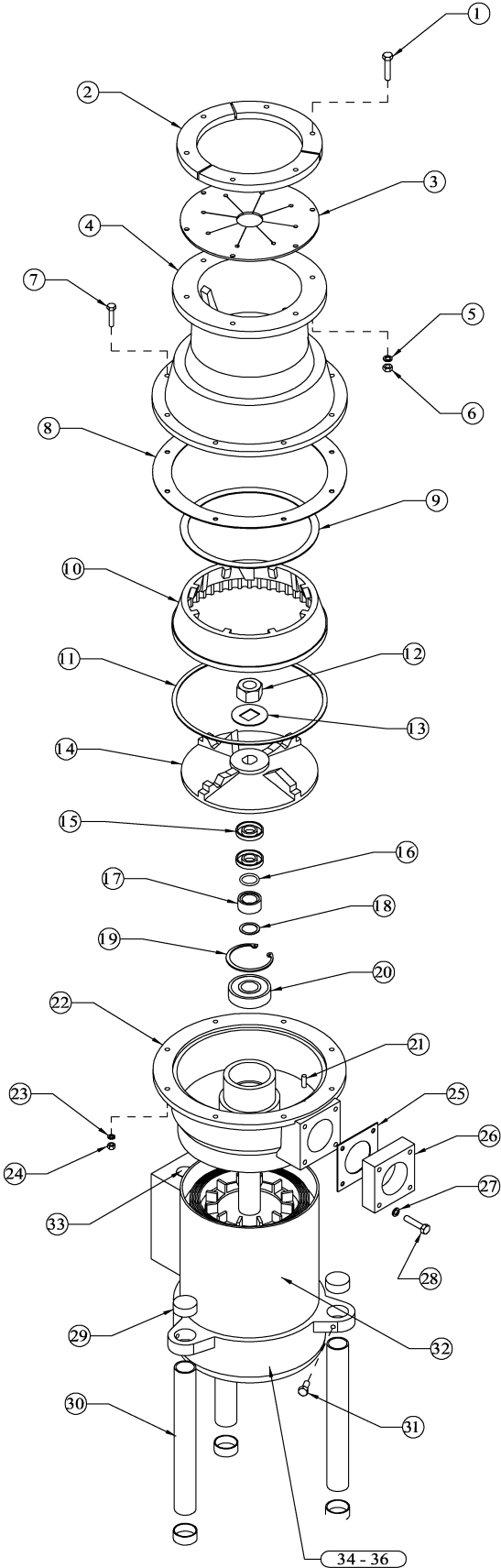


# BusBoy by



## BUSBOY 2000

BASE UNIT NUMBER  
B2000B00015

2 HP

ITEM #	PART #	DESCRIPTION	QTY
1	BI 0330	BOLT, ADAPTER	6
2	BI 0228	ADAPTER SEGMENTS	3
3	BI 0229	SLOTTED GASKET	1
4	BI 0262	HOPPER	1
5	BI 0225	LOCK WASHER	6
6	45050	NUT	6
N/S	BI 3013	WATER INLET KIT	1
N/S	BI 6800	SHANK WASHER	1
7	46149	BOLT	8
8	BI 0266	BOTTOM GASKET	1
9	BI 0265	TOP GASKET	1
10	BI 0267	SHREDDING SLEEVE	1
11	BI 0291	SLEEVE GASKET	1
12	BI 0290	LOCK NUT	1
13	BI 7002	LOCK WASHER	1
14	BI 0505	ROTOR	1
15	BI 0273	WATER SEAL	2
16	BI 0272	O-RING	1
17	BI 0271	SPACER	1
18	BI 4140	BRASS WASHER	1
19	BI 0516	SNAP RING	1
20	BI 0269	TOP BEARING	1
N/S	BI 9003	BEARING AND SEAL KIT	1
		- INCLUDES # 8, 9, 11 - 13, 15 - 20	
21	BI 0514	ROLL PIN	1
22	BI 0662	DRAIN HOUSING	1
N/S	BI 4145	DRAIN KIT ASSEMBLY	1
		- INCLUDES # 15 - 22	
23	45151	LOCK WASHER	8
24	45051	NUT	8
25	BI 0255	DRAIN ADAPTER GASKET	1
26	BI 0254	DRAIN ADAPTER	1
27	BI 0225	LOCK WASHER	4
28	BI 0330	BOLT	4
N/S	BI 0537	DRAIN ADAPTER KIT	1
		- INCLUDES # 25 - 28	
29	BI 0375	CAP, 1 1/4", LEG	6
30	BI 0374	1 1/4" OD LEG	3
31	B2000552	SCREW, LEG	3
32	BI 0918	MOTOR ASSEMBLY	1
33	BI 4112	RESET SWITCH ; 3 PH ; SCREW-IN	1
34	BI 0238	BOTTOM BEARING ; MOTOR	1
35	BI 4103	COOLING FAN ; MOTOR	1
36	BI 4109	FAN GUARD ; MOTOR	1
N/S	B2000PK0015	POWER PACK ; 3 PHASE	1
		- INCLUDES # 8, 9, 11-13, 15-22, 29-32	

N/S = NOT SHOWN



301 Meuse Argonne Hicksville, OH  
1-800-782-6761 Toll Free 419-542-6690 Fax  
[www.nemcofoodequip.com](http://www.nemcofoodequip.com)

47085  
3/2/06