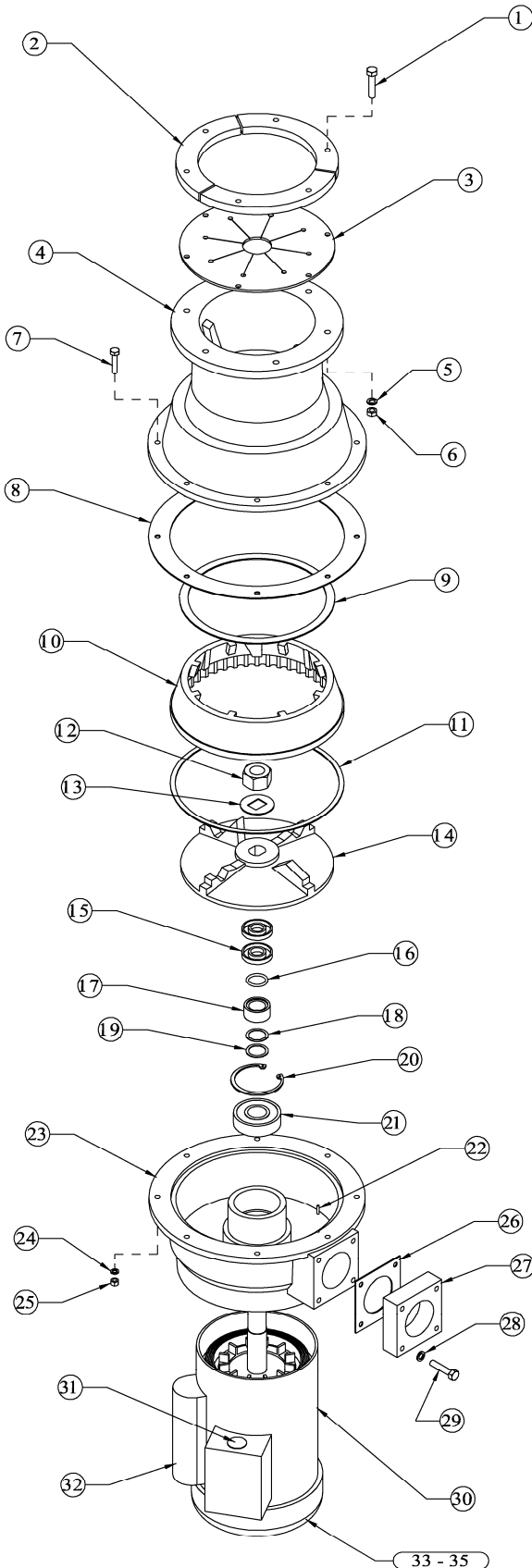


BusBoy by

NEMCO

FOOD EQUIPMENT



BUSBOY 1500

BASE UNIT NUMBERS
 BI 500B0001 1 (1 PHASE)
 BI 500B0001 5 (3 PHASE)

1 1/2 HP

ITEM #	PART #	DESCRIPTION	QTY
1	BI 0330	BOLT, ADAPTER	6
2	BI 0228	ADAPTER SEGMENTS	3
3	BI 0229	SLOTTED GASKET	1
4	BI 0262	HOPPER	1
5	BI 0225	LOCK WASHER	6
6	45050	NUT	6
N/S	BI 3013	WATER INLET KIT	1
N/S	BI 6800	SHANK WASHER	1
7	46149	BOLT	8
8	BI 0266	BOTTOM GASKET	1
9	BI 0265	TOP GASKET	1
10	BI 0267	SHREDDING SLEEVE	1
11	BI 0291	SLEEVE GASKET	1
12	BI 0290	LOCK NUT	1
13	BI 7002	LOCK WASHER	1
14	BI 0505	ROTOR	1
15	BI 0273	WATER SEAL	2
16	BI 0272	O-RING	1
17	BI 0271	SPACER	1
18	BI 4140	BRASS WASHER	1
19	BI 0277	BRASS WASHER (THICK)	1
20	BI 0516	SNAP RING	1
21	BI 0269	TOP BEARING	1
N/S	BI 9003	BEARING AND SEAL KIT	1
		- INCLUDES # 8, 9, 11 - 13, 15 - 21	
22	BI 0514	ROLL PIN	1
23	BI 0662	DRAIN HOUSING	1
N/S	BI 4145	DRAIN KIT ASSEMBLY	1
		- INCLUDES # 15 - 23	
24	45151	LOCK WASHER	8
25	45051	NUT	8
26	BI 0255	DRAIN ADAPTER GASKET	1
27	BI 0254	DRAIN ADAPTER	1
28	BI 0225	LOCK WASHER	4
29	BI 0330	BOLT	4
N/S	BI 0537	DRAIN ADAPTER KIT	1
		- INCLUDES # 26 - 29	
30	BI 0914	MOTOR ASSM ; 1 PHASE	1
	BI 0915	MOTOR ASSM ; 3 PHASE	1
31	BI 4093	RESET SWITCH ; 1 PH ; SCREW-IN	1
	BI 4093-1	RESET SWITCH ; 1 PH ; SNAP-IN	1
	BI 4096	RESET SWITCH ; 3 PH ; SCREW-IN	1
	BI 4096-1	RESET SWITCH ; 3 PH ; SNAP-IN	1
32	BI 4079	CAPACITOR ; 1 PH ; OLD-STYLE	1
	BI 4079-1	START CAPACITOR ; 1 PH ; NEW	1
	BI 4079-2	RUN CAPACITOR ; 1 PH ; NEW	1
33	BI 4065	BOTTOM BEARING ; MOTOR	1
34	BI 4059	COOLING FAN ; MOTOR	1
35	BI 4067	FAN GUARD ; MOTOR	1
N/S	BI 500PK0011	POWER PACK ; 1 PHASE	1
		- INCLUDES # 8, 9, 11 - 13, 15 - 23, 30	
N/S	BI 500PK0015	POWER PACK ; 3 PHASE	1
		- INCLUDES # 8, 9, 11 - 13, 15 - 23, 30	

N/S = NOT SHOWN



301 Meuse Argonne Hicksville, OH
 1-800-782-6761 Toll Free 419-542-6690 Fax
www.nemcofoodequip.com

47084
 10/31/06