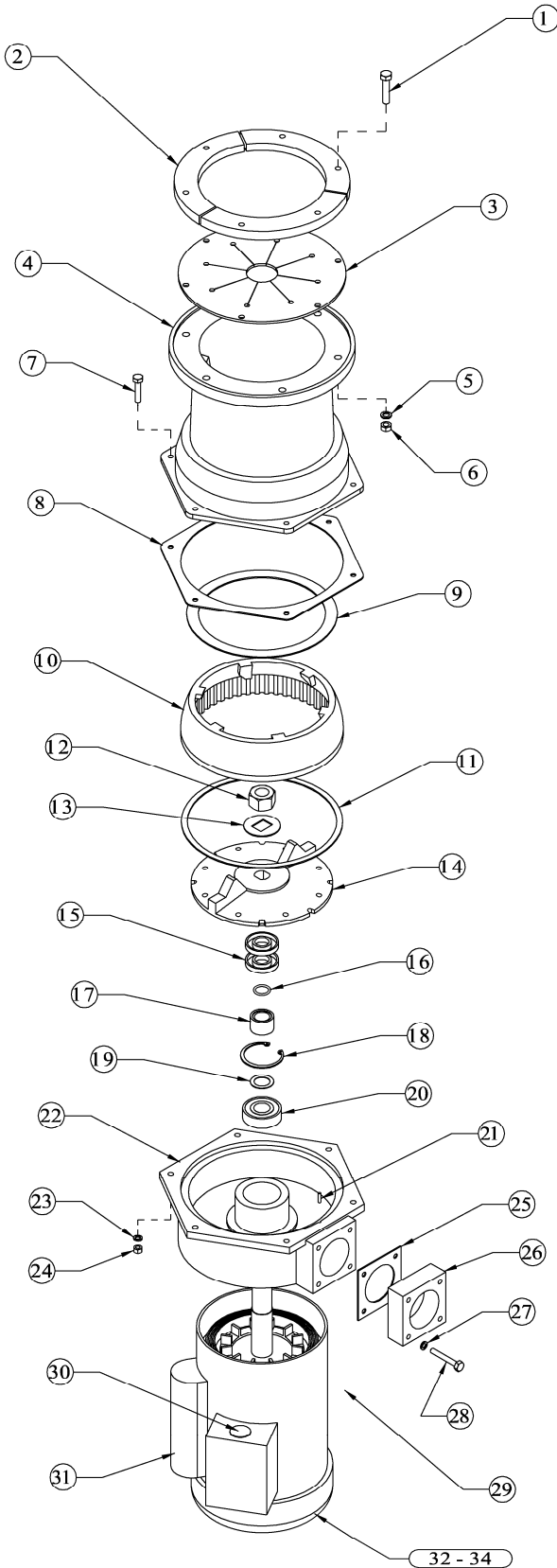


# BusBoy by

# NEMCO

FOOD EQUIPMENT



## BUSBOY 1000

BASE UNIT NUMBERS  
 BI 000B00011 (1 PHASE)  
 BI 000B00015 (3 PHASE)

1 HP

ITEM #	PART #	DESCRIPTION	QTY
1	BI 0330	BOLT, ADAPTER	6
2	BI 0228	ADAPTER SEGMENTS	3
3	BI 0229	SLOTTED GASKET	1
4	BI 0472	HOPPER	1
5	BI 0225	LOCK WASHER	6
6	45050	NUT	6
N/S	BI 3013	WATER INLET KIT	1
N/S	BI 6800	SHANK WASHER	1
7	461 49	BOLT	6
8	BI 0235	BOTTOM GASKET	1
9	BI 0234	TOP GASKET	1
10	BI 0236	SHREDDING SLEEVE	1
11	BI 0261	SLEEVE GASKET	1
12	BI 0260	LOCK NUT	1
13	BI 7003	LOCK WASHER	1
14	BI 0499	ROTOR	1
15	BI 0242	WATER SEAL	2
16	BI 0241	O-RING	1
17	BI 0240	SPACER	1
18	BI 0515	SNAP RING	1
19	BI 41 42	BRASS WASHER	1
20	BI 0238	TOP BEARING	1
N/S	BI 9002	BEARING AND SEAL KIT	1
		- INCLUDES # 8, 9, 11 - 13, 15 - 20	
21	BI 051 4	ROLL PIN	1
22	BI 0655	DRAIN HOUSING	1
N/S	BI 41 44	DRAIN KIT ASSEMBLY	1
		- INCLUDES # 15 - 22	
23	451 51	LOCK WASHER	6
24	45051	NUT	6
25	BI 0460	DRAIN ADAPTER GASKET	1
26	BI 0459	DRAIN ADAPTER	1
27	451 51	LOCK WASHER	4
28	45693	BOLT	4
N/S	BI 0536	DRAIN ADAPTER KIT	1
		- INCLUDES # 25 - 28	
29	BI 41 33	MOTOR ASSM ; 1 PHASE	1
	BI 091 1	MOTOR ASSM ; 3 PHASE	1
30	B21 021	RESET SWITCH ; 1 PH ; SCREW-IN	1
	B21 021 -1	RESET SWITCH ; 1 PH ; SNAP-IN	1
	BI 41 01	RESET SWITCH ; 3 PH ; SCREW-IN	1
	BI 41 01 -1	RESET SWITCH ; 3 PH ; SNAP-IN	1
31	BI 4079	CAPACITOR ; 1 PH ; OLD-STYLE	1
	BI 4079-1	START CAPACITOR ; 1 PH ; NEW	1
	BI 4079-2	RUN CAPACITOR ; 1 PH ; NEW	1
32	BI 4065	BOTTOM BEARING ; MOTOR	1
33	BI 4059	COOLING FAN ; MOTOR	1
34	BI 4067	FAN GUARD ; MOTOR	1
N/S	BI 000PK001 1	POWER PACK ; 1 PHASE	1
		- INCLUDES # 8, 9, 11 - 13, 15 - 22, 29	
N/S	BI 000PK001 5	POWER PACK ; 3 PHASE	1
		- INCLUDES # 8, 9, 11 - 13, 15 - 22, 29	

N/S = NOT SHOWN



301 Meuse Argonne Hicksville, OH  
 1-800-782-6761 Toll Free 419-542-6690 Fax  
[www.nemcofoodequip.com](http://www.nemcofoodequip.com)

47083  
 10/31/06